

DESERT WILLOW

YOU'LL APPRECIATE THE
DIFFERENCE QUALITY
MAKES IN OUR
APARTMENT HOMES

Representative Floor Plans

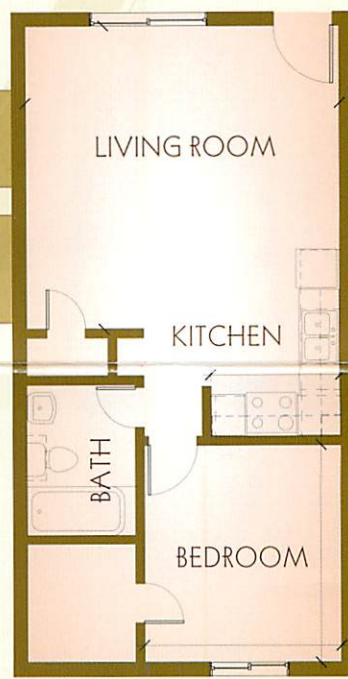
See leasing office for more detail

ONE BEDROOM

Approximately 570 sq. ft.

RENT:

DEPOSIT:



TWO BEDROOM

Approximately 750 sq. ft.

RENT:

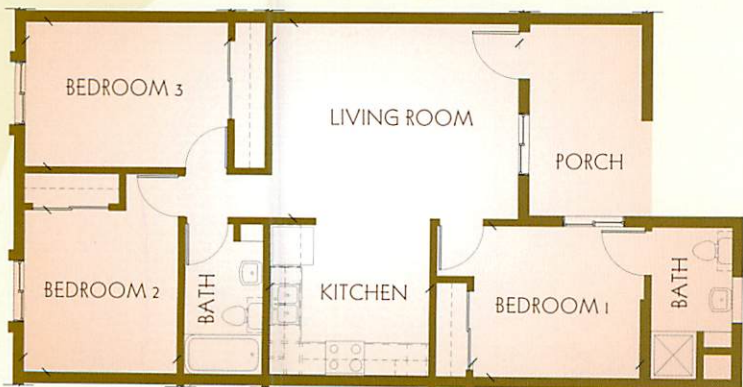
DEPOSIT:

THREE BEDROOM

Approximately 930 sq. ft.

RENT:

DEPOSIT:



APARTMENT FEATURES

- High Efficiency Heating
- Closets with Double-Rods, and Shelves
- High-Speed Internet Access Available
- Central Air Conditioning
- Locking Outside Storage (Some Units)
 - Disposals
- Energy Star Refrigerators/Dishwashers
- Natural Wood Cabinets
 - Deadbolt Locks
 - Mini-Blinds
 - Ceiling Fans



AMENITIES

- Professionally-Maintained Landscaping
- Tot Lot Playground
- On-Site Laundry Facilities
- Attentive, Professional On-Site Resident Management and Maintenance Staff



COMMUNITY CENTER

- Computers with free Wi-Fi
 - Community Room
 - Kitchenette
 - Community Pool
 - Counseling Room



WHAT'S IN IT FOR YOU?

A home with all the modern conveniences you've ever wanted. Freedom to do whatever you desire, without the responsibilities of owning a home. Truly, it's just living with the confidence of knowing you're part of a caring community like Desert Willow.

THIS IS AN OPPORTUNITY TO HAVE A LIFESTYLE DESIGNED JUST FOR YOU.

SCHEDULE YOUR TOUR TODAY

LOCATED AT
1895 Don Carlos Avenue,
Tempe, AZ 85281-4565

CALL 480.966.0830

TTY: 602.343.1500

FAX: 480.894.6350

EMAIL: desertwillowoffice@gmail.com



Shopping, schools, parks and recreation are just minutes from your doorstep. Points of interest around Desert Willow and Tempe are highlighted on the map above. Desert Willow is marked with a star.

YOU COULDN'T ASK FOR A BETTER LOCATION

DESERT WILLOW

A HOME AND A LIFESTYLE DESIGNED JUST FOR YOU